



Community Equity Roundtable: Federal Relief Funding Planning June 18, 2021



RETURN | RECOVER | REIMAGINE

Grounded in the community-driven strategic plan, BPS will invest these one-time federal relief funds to return well, recover strong and reimagine what's possible for our students





I. OVERVIEW

II. OPEN REFLECTION

III. SMALL GROUPS

IV. REPORT OUTS

AGENDA (60 min)

I. OVERVIEW (15 minutes)

II. OPEN REFLECTIONS/Q&A (10 minutes)

III. SMALL GROUPS (20 minutes)

IV. REPORT OUT (15 minutes)

What is
ESSER?



E lementary and
S econdary
S chool
E mergency
R elief

What is ESSER?



ESSER I
Spring 2020
(\$32M+\$23M)

ESSER III
Fall 2021
\$276M

ESSER II
July 30 2021
\$123M

ESSER Funds

What is ESSER?



- Allowable uses are very flexible: “preventing, preparing for, and responding to COVID-19” (examples)
 - Addressing learning loss
 - Preparing schools for reopening
 - Projects to improve school air quality
 - Coordinating preparedness/response
 - Purchasing technology
 - Mental health services and supports
- 20%+ of ESSER for Recovery (\$80M+)
 - addressing learning loss through evidence-based interventions (summer learning, extended day/year, or after-school programs)
 - Must address the disproportionate impact of COVID-19 on underrepresented student subgroups

BPS RACIAL EQUITY PLANNING TOOL

BPS RACIAL EQUITY PLANNING TOOL COMPONENTS



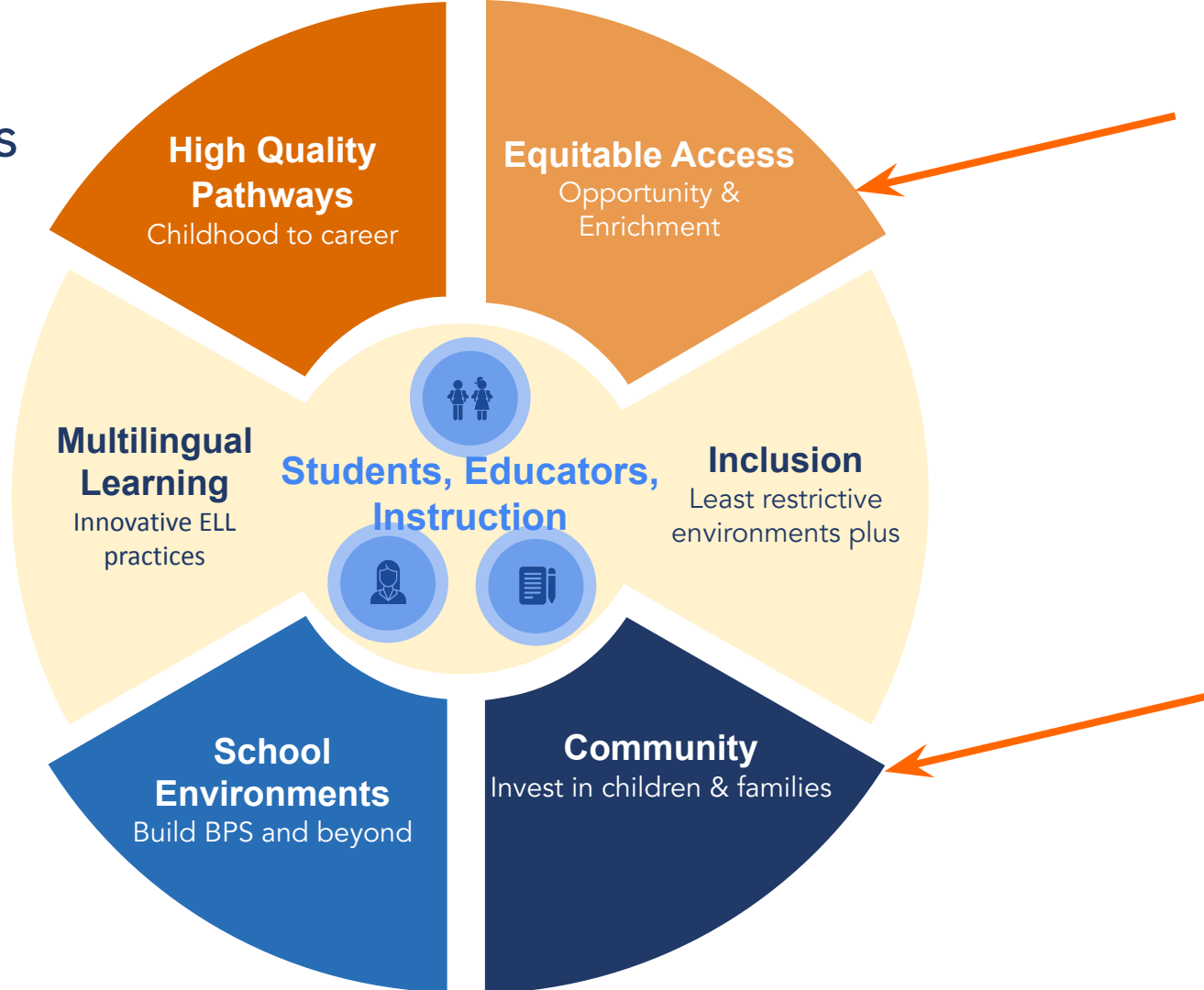
There is no higher priority for the Boston Public Schools than providing equitable access, and opportunity for every student. Research indicates that racial disparities exist in virtually every key indicator of child, family, and community well-being.

Individual, institutional and structural impacts of race, racism, and other biases are pervasive, and significantly affect key life indicators of success. Advancing racial equity is OUR work. Every member of the BPS community is expected to share an awareness of inequities, and a personal commitment to eliminating them through deliberate action.

The BPS Racial Equity Planning Tool lays out a clear six-step process to operationalize this commitment to ensure each decision we make is aimed at closing opportunity gaps and advancing racial equity. The toolkit presents resources to guide the development, implementation and evaluation of significant policies, initiatives, programs, professional development, instructional practices and budget decisions.

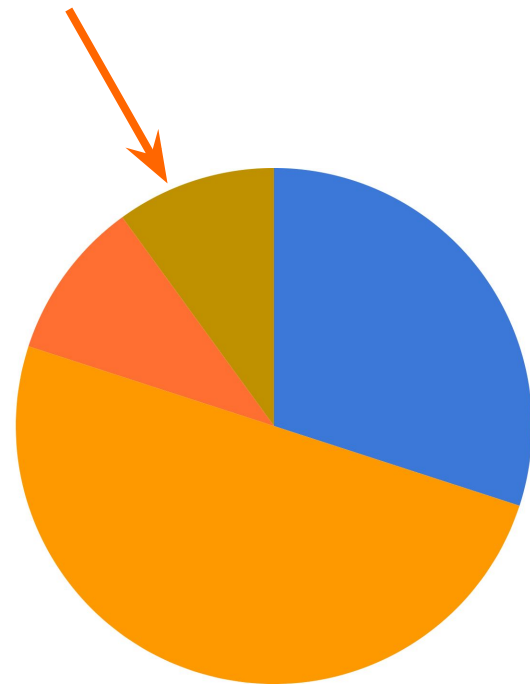
Advancing equity requires ending individual, institutional, and structural racism and bias, and deliberately, thoroughly, and consistently applying a rigorous equity lens to our work. To foster a barrier-free environment where all students, regardless of their race or ethnicity, have the opportunity to achieve, we must disrupt status quo methods of decision-making, differentiate resource allocations, include community voice, and provide the support and authentic opportunities students need to thrive.

Proposed Focus Areas



Draft Allotments for SY22 \$123M

- School Plan investments: 50% (\$60M)
Start up and scale best practices.
- Strategic District-wide investments: 30% (\$36M)
This includes centrally-deployed resources to ensure equity across schools.
- Community Partnership investments: 10% (\$12M)



Equitable Allocations to Schools

Recovery supports for all with a focus on our most marginalized students

- Started with a total allocation estimate (\$50M)
- Presented a version to ESSER Commission with a base per pupil amount, but have a revised proposal
- Funding directed to students we believe have been disproportionately harmed by the pandemic:
 - Students receiving special education services
 - Students receiving English learner supports
 - Students experiencing Poverty

Category	Enrollment	Per Pupil Amt	Category Total
All Students	50,544	--	--
Special Education	10,251	\$774	\$7,933,283
English Learners	15,328	\$774	\$6,655,577
Low Income	39,029	\$774	\$30,204,327

What this looks like when we run this allocation model with our current schools

	Total Allocation	Per Pupil Allocation
Minimum	\$90,591	\$260
Maximum	\$1,343,224	\$1,493
Median	\$385,268	\$1,076

School size is a factor driving total allocation, but less impactful now that we've removed base allocation per pupil. Larger schools will get more money than smaller schools


The biggest factor driving the per pupil allocation is the demographics of the students; schools with higher percentages of high need students will have a higher per pupil allocation.

Equitable
Allocations to
Schools

Small Groups

- ❖ What is missing here, if we are to achieve our racial equity goals?
- ❖ What do we need to do to ensure equity with ESSER that may not yet be in place?
 - Racial Equity Planning Tool
 - Opportunity Index, Weighted Student Formula
- ❖ How do we make sure we hear the voices of those not present as to leverage ESSER to *respond with accountability to their needs*?
- ❖ How should we think about best and most equitable use of our investments, esp.
 - Equitable Access, Opportunity and Enrichment
 - Community, Partnerships and Families?

Join the conversation! <https://www.bostonpublicschools.org/Page/8679>

BOSTON PUBLIC SCHOOLS

ABOUT BPS


SCHOOLS


DEPARTMENTS


ENROLL


SCHOOL COMMITTEE


CAREERS

OUR SCHOOLS

STAFF DIRECTORY

LEARN AT HOME

STRATEGIC PLAN

STUDENTS & FAMILIES

[Home](#) | [About BPS](#) | [2021 Federal Relief Funding](#)

2021 FEDERAL RELIEF FUNDING

2021 BPS Federal Relief Funding ×

Community Engagement

ESSER Commission

School-Based Equity Roundtables





Federal Relief Funding

BPS is expecting **\$400M** via the Elementary and Secondary School Emergency Relief (ESSER) Fund.